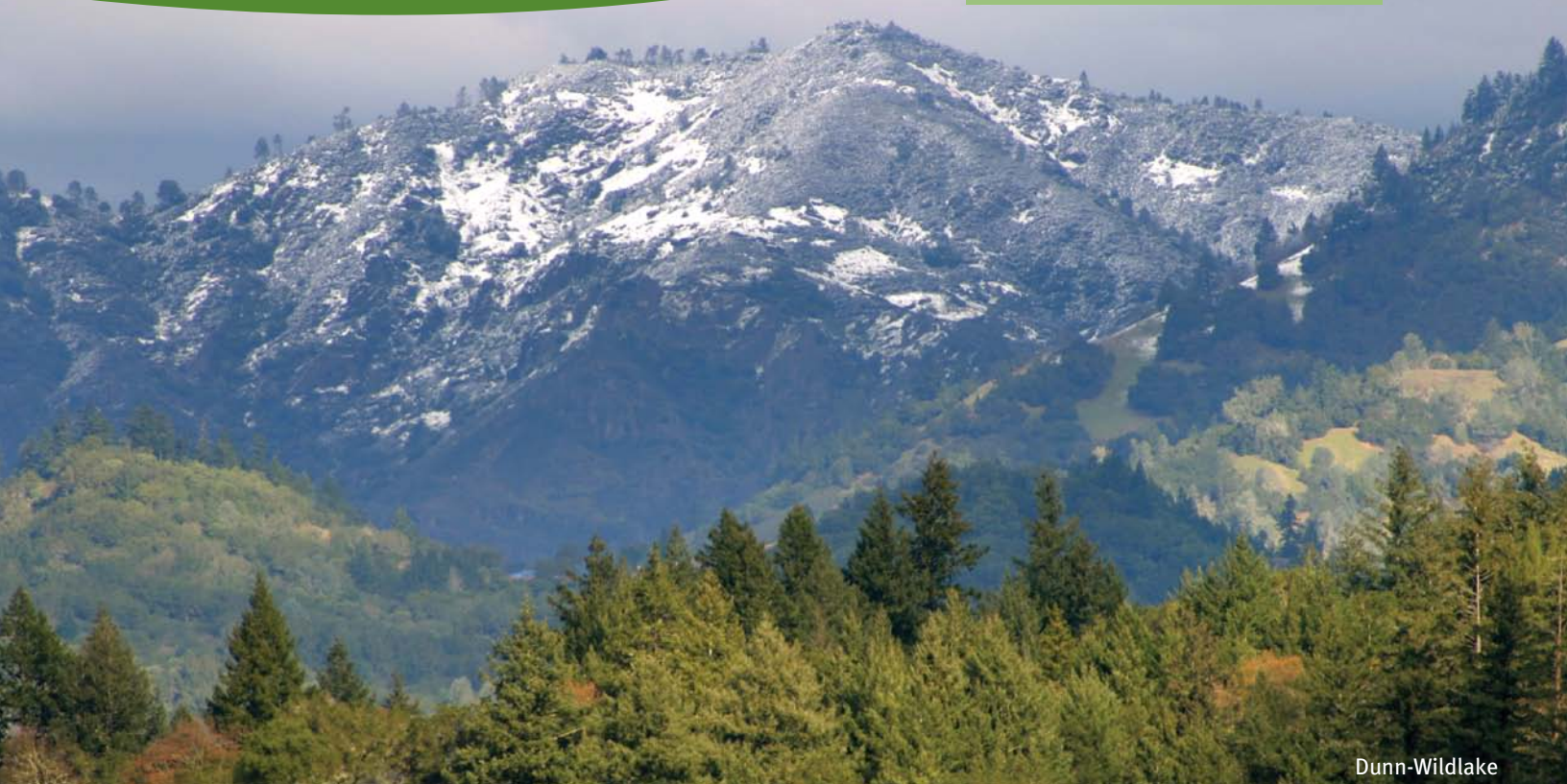


Protect, Steward, Thrive

The Newsletter for Land Trust of Napa County • Fall 2011



Dunn-Wildlake

Photo: Marissa Carlisle

Table of Contents

Napa County Landmarks Honors Land Trust	1
Letter from the CEO	2
Preserve Spotlight: Linda Falls Preserve	3
Power of Partnership	4
Corporate Partners	5
We Need Your Support	5
Feast of Eden Highlights	6
Welcome New Board Members & Staff	7
Board of Trustees	8
Staff	8
Upcoming Field Trips & Events	8

Land Trust Receives “Historic Landscapes” Merit Award

On October 9, 2011, Napa County Landmarks held its 2011 Awards of Merit Celebration: “Celebrating Napa Rural Heritage.” This year, in addition to the annual awards for building preservation, Napa County Landmarks honored organizations and individuals who have been instrumental in the preservation of the local landscape. The Land Trust of Napa County is among the first to receive the inaugural “Historic Landscapes” Merit Award, a brand new category for Napa County Landmarks, for the Trust’s successful effort to permanently protect the Wildlake and Duff Ranches through the historic Napa Valley Wild! Campaign.

“We couldn’t be more proud to be the recipients of this inaugural ‘Historic Landscapes’ award. It’s especially gratifying to know that this effort to protect these important properties is being acknowledged by an equally important organization like Napa County Landmarks. This award reinforces that permanently protecting the Wildlake Ranch and adjacent Duff Ranch properties was right thing to do.”—Joel Tranmer, CEO, Land Trust of Napa County



This holiday season, connect someone you love with the Land Trust by giving the gift of membership or Funding an Acre in their honor! Visit napalandtrust.org or use enclosed envelope (details on page 5).



We Need Your Support

- *Become a Member*
- *Volunteer*
- *Become a Corporate Partner*

*Visit us online at
napalandtrust.org*

Letter from the CEO

One evening in 1976, my father and a small group of other ‘Napkins’ gathered on Mt. George to discuss the future of what would become the Foote Botanical Preserve and the birthplace of the Land Trust of Napa County.

What we’ve achieved over the past 35 years is no small feat. We’ve grown from seven founding members to 1,700 active members and supporters. Together we’ve protected over 53,000 acres of the land that matters most: the land that defines the character of Napa County. This means farmland, beautiful vistas, water resources, recreational areas and wildlife habitats.

We have accomplished a great deal in the area of land conservation but there is much more work to be done. As we continue to work on land protection we are also turning our focus to the stewardship of our Permanent Preserve Network—a total of 6,600 acres we own, contained in nine preserves. There are native plants to care for, invasive species to eradicate, animal corridors to keep open, trails to build and maintain, erosion concerns, hikes and field trips to plan, and environmental programs to create and operate for the benefit of the public. These efforts take countless hours on the part of dedicated volunteers and staff members. Some of the work done by our trusted volunteers is easement monitoring and leading field trips, and each preserve has a volunteer committee that helps with the overall management of the property. We simply could not do our work and provide public access to our preserves without the support of these wonderful people.



As the leading community-based nonprofit dedicated to preserving the character of Napa by permanently protecting land, we depend on the collective philanthropy of individuals like you to fund this important work. This holiday season I hope you will connect someone you love with the Land Trust by giving the gift of membership or Funding an Acre in their honor!

Sincerely,



Joel Tranmer

Preserve Spotlight: Linda Falls Preserve



The Linda Falls Preserve is situated near the community of Angwin in Napa County. The property was gifted to the Land Trust by Harmon Frohmuth, Ed Van Egri and Kathleen Heitz-Myers over the course of several years, with the final parcel arriving in spring 2011.

The newest addition to the Land Trust's Permanent Preserve Network of nine properties (totaling 6,600 acres), this 170-acre property contains scenic open space and forested habitat, and features a unique waterfall where Conn Creek cascades over angular volcanic boulders.

Today, the Preserve protects over 132 native plant species including 11 tree species and 32 types of shrubs. It also protects the rare Napa False Indigo, one of the largest populations of narrow-anthered California Brodiaea, rare creeping wild ginger and California willow-herb.



Trancas Crossing Park

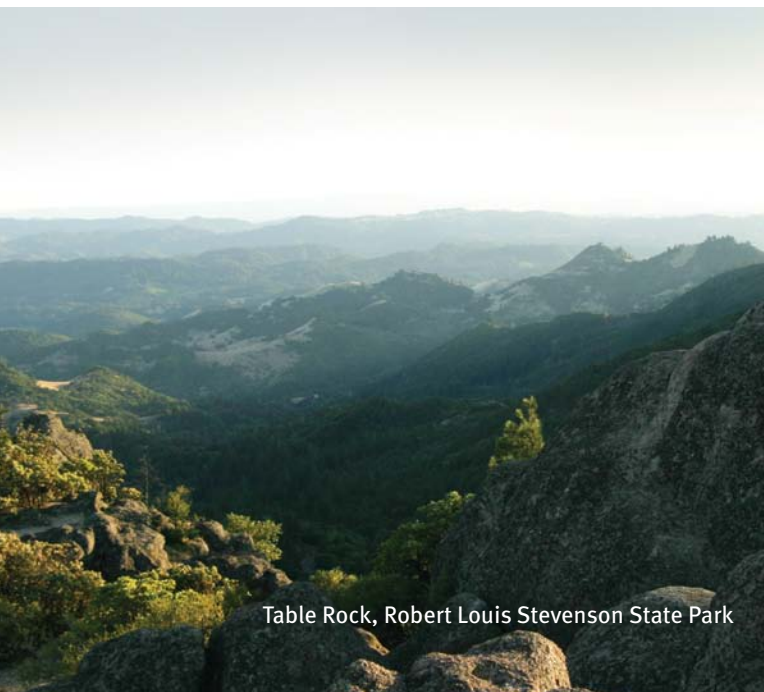


Table Rock, Robert Louis Stevenson State Park



Berryessa Vista

Power of Partnership

The Land Trust collaborates with the community to protect our most cherished places, while supporting our economic livelihood and well-being. For Napa County this means protecting farmland, water resources, beautiful vistas, and natural habitats and recreational areas. Since 1976, the Land Trust has completed over 150 projects protecting more than 53,000 acres. Over half those acres represent public parks and recreational areas in Napa County.

Here are just a few highlights:

Trancas Crossing Park

Johnny Miller generously donated a conservation easement on this 33-acre property located in north Napa. The Land Trust later purchased the property and transferred the remaining interest to the City of Napa for a future public park and terminus of the Napa River Trail. The new Trancas Crossing Park opened in September of 2011 and is a beautiful urban oasis for bikers, runners and dog walkers alike.

Robert Louis Stevenson State Park

Between 1981 to 2000—nearly two decades—the Land Trust played a key role in establishing the Palisades and Oat Hill Mine Trails as premier public hiking destinations. This was made possible through the acquisition and transfer of over 1,710 acres to the Robert Louis Stevenson State Park.

Berryessa Vista

These 261 acres of stunning oak forests, chaparral and grasslands on the shore of Lake Berryessa were donated by Dr. Dwight and Jan Murray, Dr. Howard Way and Dr. Paul White. After placing a conservation easement on the property, it was then transferred to the Napa County Parks and Open Space District for use as a public park and recreation area.



Corporate Partners

In our mission to preserve Napa, the Land Trust is not alone. In fact, there are a number of organizations who share our philosophy, but realize it in a different, yet complementary way. Together, we are creating innovative ways to keep Napa beautiful. Following are highlights of some of our valued Corporate Partners.

The Hess Collection

The Hess Collection's sustainability practices clearly reflect their philosophy "Nurture the land and return what you take." This is also why the organization participates in 1% for the Planet, a growing global movement of companies donating 1% of sales for local environmental programs. The Hess Collection is a long time member of 1% and this year the Land Trust of Napa County, along with the Napa County Student and Landowner Education and Watershed Stewardship Program (SLEWS), are proud joint recipients of Hess's gift. "We're pleased this year to be part of a joint focusing of efforts with the Land Trust and the SLEWS program partners," noted Gary Bulger, president of The Hess Collection. "Preserving, protecting and enhancing the environment are goals best shared with young people who will be guiding the future."

Fuller & Sander Communications

Lead by co-founders and principals Monty Sander and Tom Fuller, Fuller & Sander Communications donates hours of time and energy to help the Land Trust share our mission locally, regionally and nationally. "The Land Trust plays such a pivotal role in the community. It is an honor to work with them and help preserve the character of Napa County," says Tom Fuller.

Help Preserve Napa County!

This holiday season connect someone you love with the Land Trust by giving the tax deductible gift of Membership or Funding an Acre in their honor! Makes a great corporate/business gift, too!

- *Donate online at napalandtrust.org or use the enclosed envelope.*

A) Membership

As a member, your loved one will receive:

- A holiday card informing them of your generous gift
- Access to our full Field Trip program of 40+ hikes annually, including members-only hikes and events
- A subscription to our bi-annual newsletter and monthly e-newsletter
- Invitations to members-only events

B) Fund an Acre

The Land Trust owns nine unique properties containing 6,600 total acres in our Permanent Preserve Network.

Why It's Important

- The Network helps create the beautiful vistas that drive Napa's tourism industry & make it a unique place to call home.
- It provides over 39 hiking trails accessible year-round via Land Trust field trips.
- Each year, 30+ student and scout groups work and learn on the preserves during Eagle Scout work projects and environmental education programs.
- Volunteers and visitors spend over 5,000 hours in the Preserve Network each year.

The Goal: Raise \$166,000 to steward 6,600 acres = ~\$25 an acre.

The Power of Your Gift

By giving the gift of membership, your broad support will help preserve and steward Napa County for future generations. By funding an acre you help with targeted efforts like maintaining hike trails, removal of invasive plants, and ensuring the Network continues to be an environmental education source for youth, as well as, the broader Napa community.



Feast of Eden Highlights

On October 8, the Land Trust celebrated our 35th Anniversary in style at the seventh annual Feast of Eden Gala. This amazing event, hosted by Raymond Vineyards and Honorary Chair Jean-Charles Boisset, was a “Fête Champêtre,” or French country garden feast. We welcomed more than 250 guests, and raised nearly \$300,000 to continue the work of protecting the lands and character of Napa County (Photos courtesy of Julia Allen & Sylvain Gentile).



Raymond Table Settings



Auctioneer, Fritz Hatton



Jean-Charles Boisset welcomes special guests to the Crystal Cellar.



Land Trust's amazing volunteers & staff with Jean-Charles Boisset



Exploring the vineyards



Joel & Kathy Tranmer

Welcome New Board Members & Staff

Mike Fisher, Board Trustee

Experience: Mike is a wine business advisor and founding partner of Global Wine Partners LLC (GWP). GWP provides financial consulting, merger and acquisition advisory and valuation services to the wine industry. He began his career with Price Waterhouse in San Francisco and also held positions as partner and CPA with Motto Kryla & Fisher and as CFO of Joseph Phelps Vineyards. He has lived in Napa Valley since 1978, moving to his current home on Mt. Veeder in 1984. He is also a director of the Napa Valley Grapegrowers and the St. Helena Chamber of Commerce.

Hobbies: Wine, skiing, golf and fly fishing.

"Having been a member of the Land Trust for many years, I'm excited to expand my involvement as a Board member. Preservation of undeveloped land in the agriculture watershed is critical to the Land Trust's mission, as is allowing vineyard owners the ability to limit further development through gifts of conservation easements to the Land Trust. With my wine industry and financial background, I look forward to helping expand the vineyard acreage subject to these easements. After all, it's about preserving what we have for future generations."

Bruce Phillips, Board Trustee

Experience: A 20-year veteran of the food and consumer product industry, Bruce has participated in the successes of a variety of consumer product ventures, from Odwalla to Constellation Brands Inc. Bruce is managing partner of Phillips Family Farming LLC, a premium Oakville winegrape grower and producer of VHR, Vine Hill Ranch Cabernet Sauvignon.

Former president of the Napa Valley Grapegrowers (NVG), Bruce currently also serves on the Boards of the California Association of Winegrape Growers (CAWG) and Blue Oak School—a progressive primary school in Napa, California.

Hobbies: Skiing, hiking, fishing and hunting.

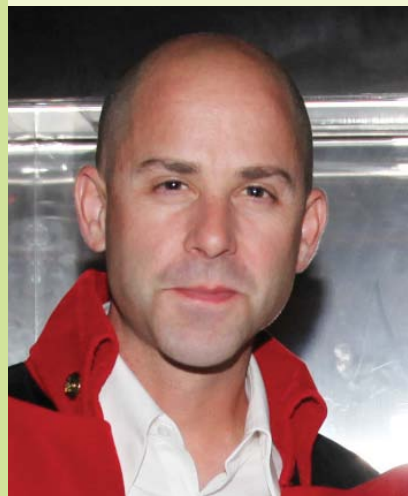
"For years I've watched as the Napa County Land Trust has successfully protected tens of thousands of acres of diverse Napa County agricultural land and open space from development. I am excited about the opportunity to personally support the Land Trust's vision to ensure that Napa County's rich agricultural and natural resources continue to be protected for generations!"

Mike Palladini, Staff: Land Stewardship Manager

Experience: Mike has an extensive background in land stewardship and field biology, having spent eight years working on avian research and conservation projects for a number of organizations including the U.C. Santa Barbara Marine Science Center, PRBO Conservation Science, U.S. Forest Service Pacific Southwest Research Station, and University of Montana Avian Science Center. Prior to joining the Land Trust, Mike served as Land Steward for a watershed conservation group in northwest Montana's Swan River Valley, where he assisted private landowners with development of conservation plans and implementation of restoration and management projects.

Hobbies: Birding, botanizing, hiking, canoeing, cycling, camping and travelling.

"From oak savannah to redwood forest, the Land Trust's preserve system supports a highly diverse assemblage of plant and animal species. I consider it an honor and a privilege to be tasked with protecting, restoring and helping others to appreciate these outstanding biological resources."



Board of Trustees

Robert Andreae..... Chair
Emery Dameron..... Vice Chair
Amy Smith..... Treasurer
Alice Jane Kubler.... Secretary
Chip Bouril
David Butler
John Conover
Anne Cottrell
Mike Fisher
David Graves
Bruce Phillips

Staff

Joel Tranmer..... CEO
Theresa Andrews... Administrative Director
Kimberly Barrett.... Corporate Partners
John Hoffnagle..... Senior Director of
Land Protection
B.B. Huff..... Development Director
Mike Palladini..... Land Stewardship Manager
Lena Septimo..... Lands Project Manager
Karin Troedsson.... Staff Attorney
Louise Vicencio.... Administrative Assistant

**Look for updates on our website
at napalandtrust.org**



Printed on FSC/SFI certified, 10% Post Consumer
Fiber stock with soy-based ink.

Upcoming Field Trips & Events

November 2011

- | | | |
|----|--------------------------------|----------|
| 19 | Aetna Springs to Swartz Canyon | M-3mi-++ |
| 26 | Wildlake and Duff | H-7mi-++ |

December 2011

- | | | |
|----|--|------------|
| 2 | Archer Taylor Preserve & Devil's Well | H-4mi-++** |
| 4 | Dunn-Wildlake Ranch History | M-6mi-++ |
| 11 | Wantrup Wildlife Sanctuary Exploration | H-8mi-++** |

January 2012

- | | | |
|----|---------------|-----------|
| 14 | Maggie's Peak | V-6mi-+++ |
|----|---------------|-----------|

February 2012

- | | | |
|----|----------------------------------|------------|
| 4 | Mt. George Waterfalls | S-5mi-++** |
| 18 | ATP First Falls | M-2mi-++ |
| 25 | Wildlake-Aetna Springs Dual Hike | S-11mi-+++ |

June 2012 – Land Trust Month

** Member event

Please visit napalandtrust.org for details and to register.

Archer Taylor Preserve



Hike Rating

DIFFICULTY	MILES	ELEVATION GAIN
E = Easy	<i>See hike description for mileage</i>	+ less than 1,000 ft (relatively flat)
M = Moderate		++ 1,000 to 2,000 ft (some uphill)
H = Hard		+++ 2,000 to 3,000 ft (lots of uphill)
S = Strenuous		++++ over 3,000 ft (steep)
V = Very Strenuous		

For example,

M-3mi-+ is a moderately difficult 3-mile hike with less than 1,000 ft elevation gain.